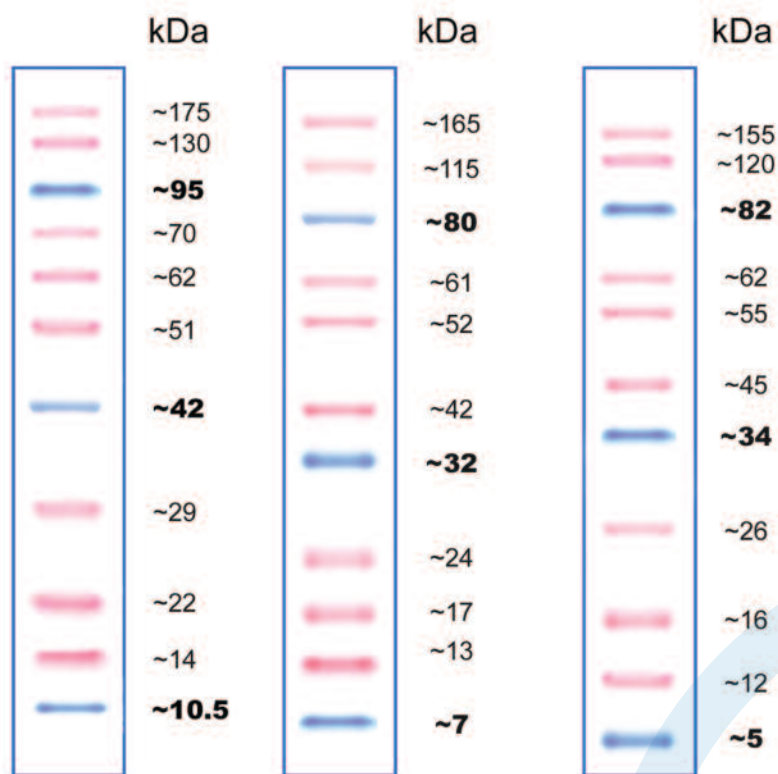




# proteinLADDERS

Adding colour to your PAGE



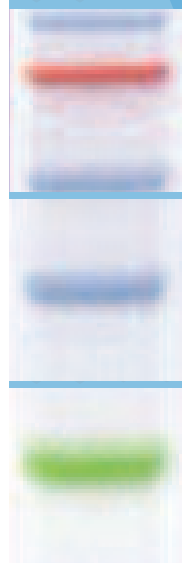
Tris-Glycine  
15%

Bis-Tris 4~12%  
MOPS buffer

Bis-Tris 4~12%  
MES buffer

## PINK Plus and BLUE Wide Range

recombinant  
protein markers  
are perfect for  
SDS-PAGE  
applications



## Protein Ladder – Prestained

Adding colour to your PAGE

- Standard (10-175kDa) and wide (10-245kDa) molecular weight ranges available
- Coloured reference bands for easy identification in gels and blots
- Stable for 2 years at -20°C

Stable for up to 2 years if stored at -20°C and supplied pre-stained in gel loading buffer for direct loading, Cleaver Scientific PINK Plus and BLUE Wide Range recombinant protein markers are perfect for SDS- PAGE applications.

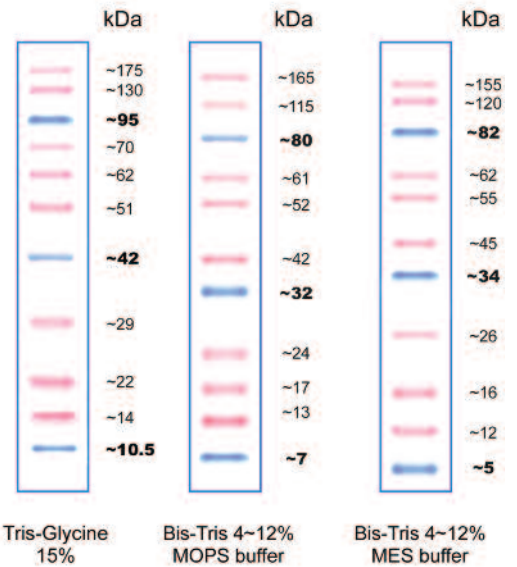
Sizes range from 10-175kDa for PINK Plus and 10-245kDa for BLUE Wide Range, making both markers suitable for accurate molecular weight determination of most cellular proteins.

Each marker is covalently bound to a pink or blue colour chromophore to produce a ladder of evenly interspersed bands of uniform intensity. Coloured reference bands serve as visual indicators of electrophoresis run progression and the efficiency of western transfer onto membranes following SDS-PAGE.

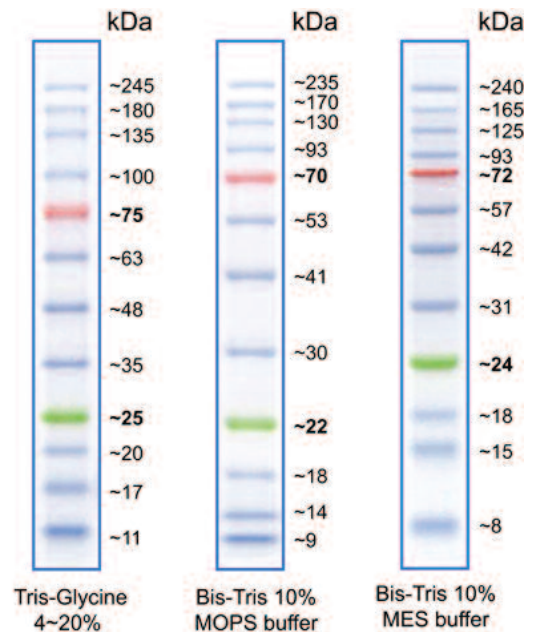
Both PINK Plus and BLUE Wide Range markers can be detected at volumes as low as 2.5µl per well.

### Technical Specifications

| Cat. No.               | CSL-PPL  | CSL-BBL  |
|------------------------|--|--|
| Size Range             | 10-175kDa  | 10-245kDa  |
| Number of Bands        | 11   | 12   |
| Reference Bands        | 10, 40 and 90kDa blue  | 25 & 75kDa; green & red  |
| Contents               | Max. 2.2mg total protein in 15% (v/v) glycerol, 2% SDS, 20mM Tris pH 7.5, 1mM 2-ME and 3.6M Urea | Max. 2.4mg total protein in 15% (v/v) glycerol, 2% SDS, 20mM Tris pH 7.5, 1mM 2-ME and 3.6M Urea |
| Volume Supplied        | 500µl  | 500µl  |
| Storage                | 2 weeks at 25°C; 3 months at 4°C & 24 months at -20°C  |  |
| Loading Volume         | 2.5-5µl/well   |  |
| Number of Applications | 100-200  |  |
| Source                 | Recombinant proteins, various sources  |  |



### PPL Pink Plus



### BBL Blue Wide Range

### ORDERING INFORMATION

**CSL-PPL**      CSL PINK Plus Prestained Protein Ladder, 10-175kDa, with 10, 40 & 90kDa reference bands, 1x 500µL vial.

**CSL-BBL**      CSL BLUE Wide Range Prestained Protein Ladder, 10-245kDa, with 25 & 75kDa reference bands, 1x 500µL vial.

### CLEAVER SCIENTIFIC LTD

Unit 41, Somers Road Industrial Estate,  
Rugby, CV22 7DH  
United Kingdom

T\_ +44 (0)1788 565300  
E\_ INFO@CLEAVERSCIENTIFIC.COM  
W\_ WWW.CLEAVERSCIENTIFIC.COM