

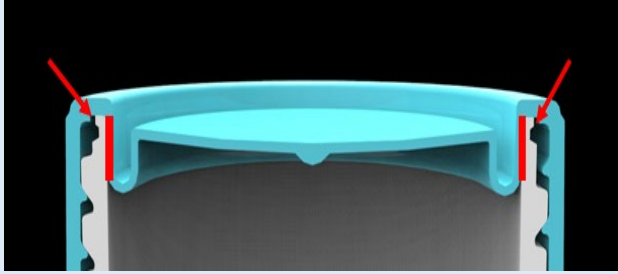
DATA SHEET

250 mL & 500mL Centrifuge Tubes

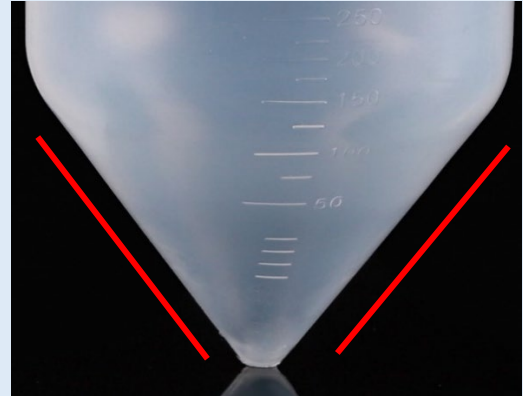
The 250mL/500mL centrifuge tubes can process a large number of samples at one time and are suitable for separation and harvest of large cells, supernatants, bacteria, yeast and tissue samples, therefore they are widely used in the field of life sciences and clinical experiments and can meet the requirements of biological analysis.

Features

1. Unique structure design of the cap provides double security, further improve the seal ability.



2. Increased the thickness of conical bottom in order to improve the maximum centrifugal limit.



3. Polypropylene tube and high density polyethylene cap
4. Max. centrifugal limit 7000xg.
5. Temperature range: -80°C~120 °C
6. Clear scale
7. DNase, RNase and pyrogen free
8. Electron beam sterilization, SAL=10⁻⁶

Application

1. Separation of sediments after chemical reactions for harvest and application.
2. Harvest of biomacromolecules, inorganics and organics.
3. In biochemistry and other biological fields, usually used to centrifuge and collect a large volume of cells, biomacromolecules and supernatants.

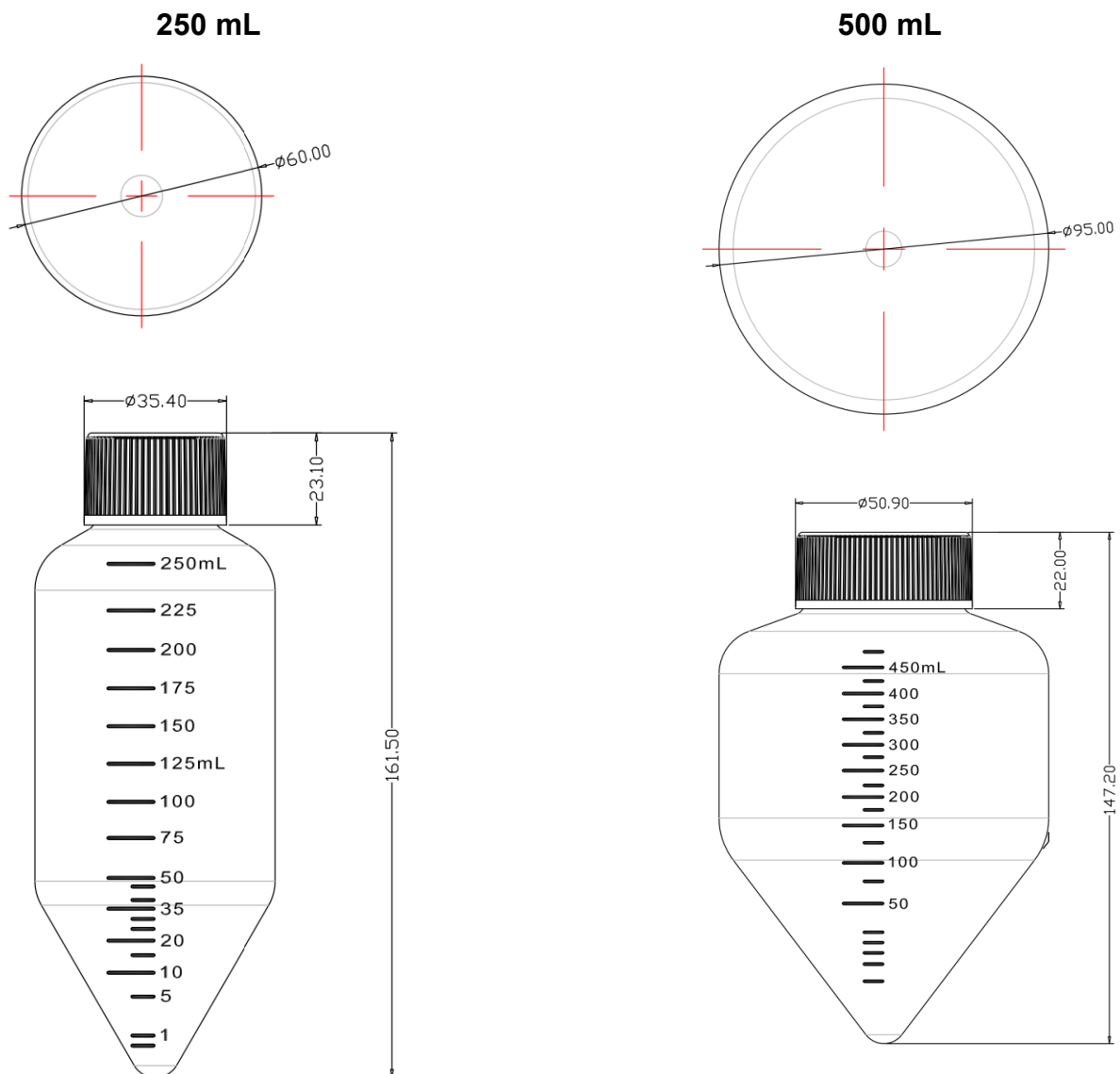
ISO9001 & ISO13485 & ISO11137

Product Range

DATA SHEET

Cat. No.	Description	Unit
172177	250mL Centrifuge Tube, Bulk, Sterilized	6 /Beutel, 24 /VE
172179	500mL Centrifuge Tube, Bulk, Sterilized	6 /Beutel, 24 /VE
172178	250mL Centrifuge Tube, PS Rack, Sterilized	6 /Beutel, 24 /VE
172180	500mL Centrifuge Tube, PS Rack, Sterilized	4 /Beutel, 24 /VE

Technical Drawing



JoJo Life Science UG (haftungsbeschränkt) - **Biberstraße 32 - 89537 Giengen**
Tel. 07322-9111329 - Mail: info@jojo-ls.de - Web: www.jojo-ls.de

For Research Use Only. © Wuxi NEST Biotechnology Co., Ltd.

www.jojo-ls.de – info@jojo-ls.de