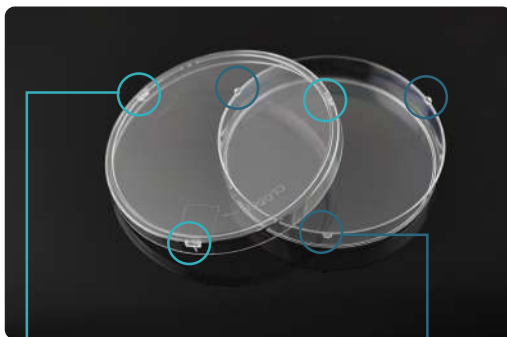


# Petri Dish with Lock

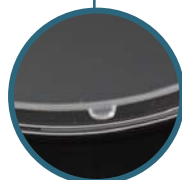
Parallel sliding clasps design, made of high medical grade polystyrene material, E-beam sterilization, can be used for fungus, bacteria and other microorganism cultivation.

Each dish has three sets of parallel sliding clasp, compare with standard dish, you don't need to worry about the lid or bottom falling off if you don't hold it properly. Cover the lid, rotate the lid clockwise in parallel, until the clasps slide into the slots to lock. Rotate the lid counterclockwise in parallel until the clasps slip out of the slots to unlock, then the lid can be taken away.

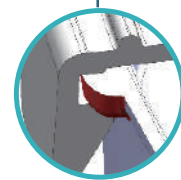
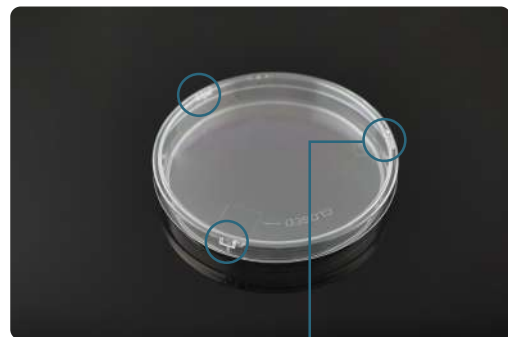
Cat.No.	Descriptions	/Pack	/Case
752101	90×15 mm Petri Dish with Lock	20	500



3 slots  
on the lid



3 clasps  
on the bottom



Technical drawing of parallel sliding  
clasps design.